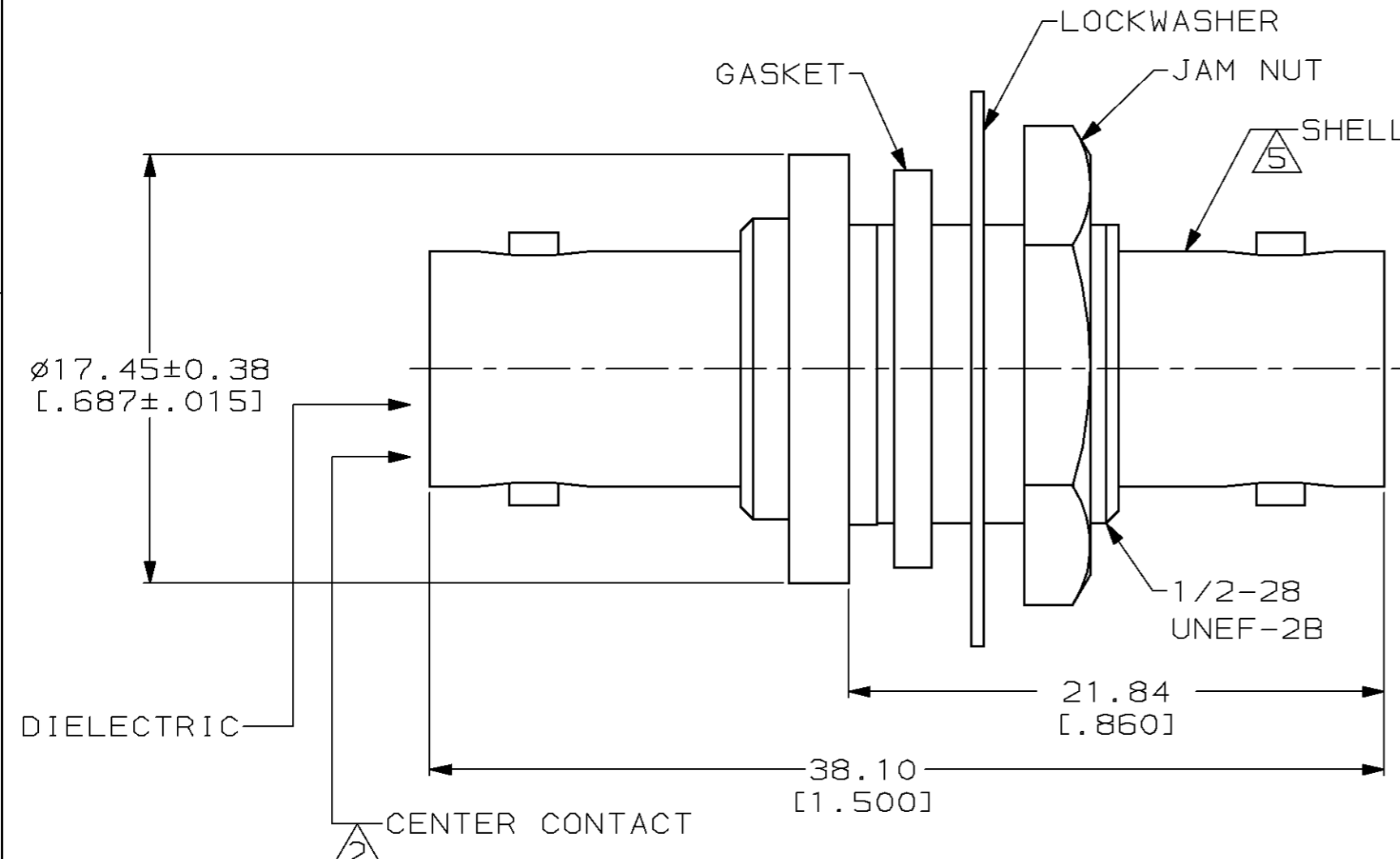
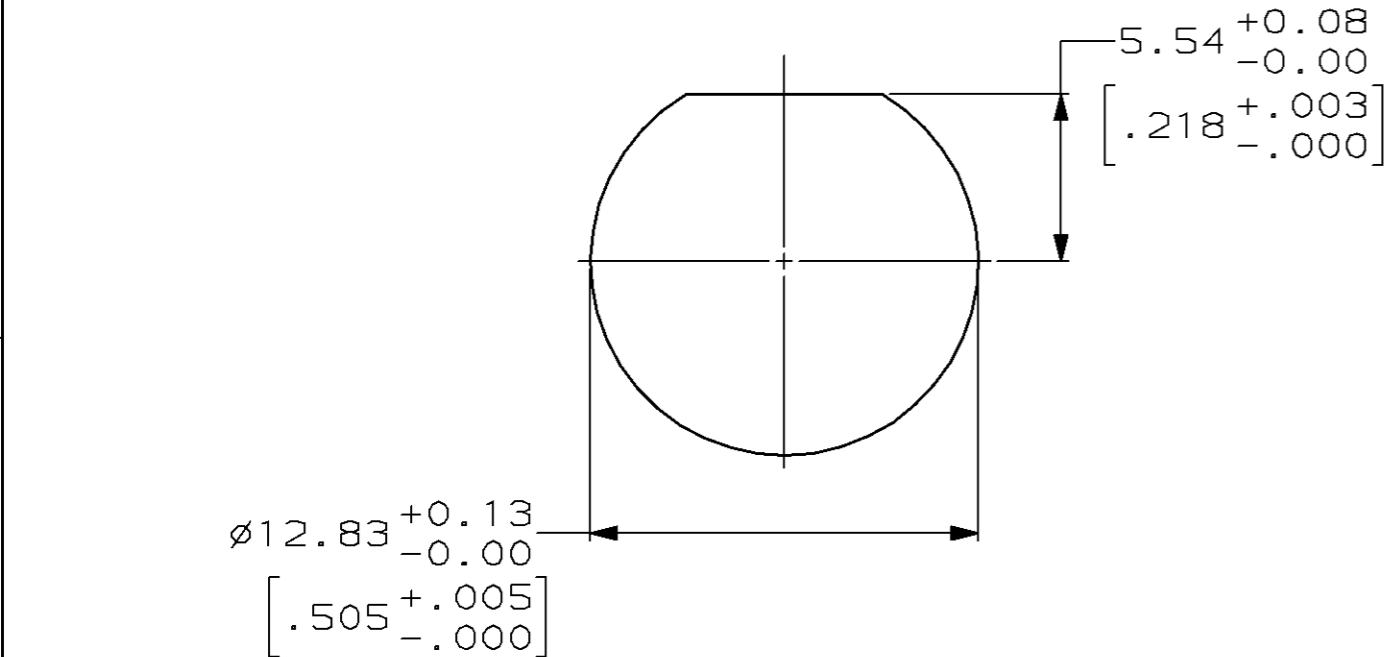


THIS DRAWING IS UNPUBLISHED. RELEASED FOR PUBLICATION, 19  
 © COPYRIGHT 19 BY AMP INCORPORATED. ALL INTERNATIONAL RIGHTS RESERVED.

LOC	DIST	P	F	ZONE	LTR	DESCRIPTION	DATE	APPD
AJ	16	✓	✓		K	REV PER 0G30-0298-98	27AUG98	JH



- 1 MATERIALS:  
 DIELECTRIC: PTFE  
 CENTER CONTACT: BERYLLIUM COPPER  
 SHELL: BRASS  
 GASKET: SILICONE  
 LOCKWASHER: PHOSPHOR BRONZE  
 JAM NUT: BRASS
- 2 SILVER PLATE PER QQ-S-365,  
 5.08µm [.000200] MIN THICKNESS
3. PRODUCT MUST BE INTERMATEABLE  
 PER MIL-C-39012
4. COMPARABLE UG/U CONNECTOR 492D
- 5 NICKEL PLATE PER QQ-N-290,  
 2.54µm [.000100] MIN THICKNESS



RECOMMENDED PANEL CUTOUT

330024  
 PART NUMBER

DO NOT SCALE PRINT. UNLESS SPECIFIED DIMENSIONS IN mm [INCHES] TOLERANCES ON: 2 PLC DEC ± 0.08 [.003] 3 PLC DEC ± - ANGLES ± -		DR 2-28-92 M.E. COWHER	AMP Incorporated Harrisburg, PA 17105-3608		
MATERIAL	CHK 3-2-92 M. PHILLIPS	NAME			
FINISH	APPD 3-2-92 M. PHILLIPS	ADAPTER, JACK, BHD, BNC	SIZE B	CAGE CODE 00779	DRAWING NO 330024
	APPD 3-3-92 M.E. COWHER	PRODUCT SPEC -	SCALE 4:1	SHEET 1 OF 1	
	APPLICATION SPEC -	WEIGHT -			